


FOSSHOTEL


RAUÐARÁ




Fosshotel Rauðará


Fosshotel Rauðará is an excellent base for a Reykjavik centre stay while remaining a convenient location for access to Reykjavik City airport. While just a short walk away from the famous shopping street of Laugavegur and the Reykjavík Art Museum, Fosshotel Rauðará still enjoys the quiet of a peaceful city neighbourhood.


 85 Rooms


 Breakfast available

 Bar

 Free WiFi

 24 hours front desk

 Check in 15.00

 Check out 12.00



Standard double room

Rooms

Standard Double or Twin Room

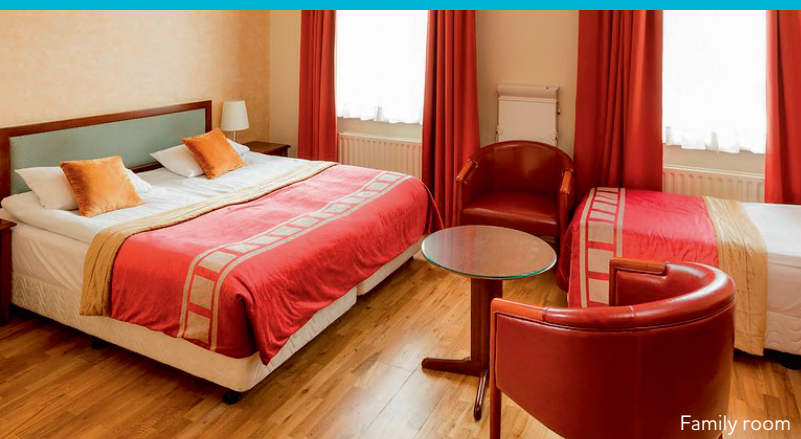
Design Superior Room

Triple Room

Single Room

Family Room

Family Suite



Family room



Design Superior Room