

# FOSSHOTEL

REYKJAVÍK



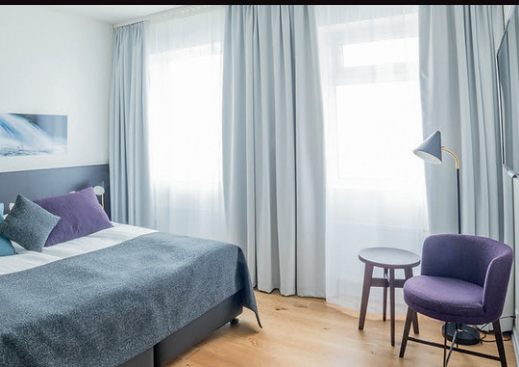
## First class in the city centre

Fosshotel Reykjavík, Iceland's largest hotel stands prominently in Reykjavík's business district, only a short walk from the main shopping area. It's convenient location makes it an excellent base for the perfect Reykjavik city holiday.

- 320 rooms
- Breakfast included
- Haust Restaurant
- Beer Garden
- Free WiFi
- 24-hour front desk
- Wheelchair accessible
- Parking available (addl. charge)
- Gym
- Tour/ticket service
- Conference and meeting rooms
- Daily housekeeping on request

## Room types

Choose between 7 different room categories at the largest hotel in Iceland. The hotel has 320 rooms on 16 floors and many rooms offer magnificent view of the city and bay area. The interior design of Fosshotel Reykjavík is dominated by warm, natural materials that make guests feel right at home.



### Standard Double or Twin Room

All standard rooms are bright, spacious (22 sqm) and beautifully designed, featuring comfy beds, wooden floors and a bathroom with shower and/or bathtub. Standard Double or Twin Room rooms are located from 2<sup>nd</sup> to 7<sup>th</sup> floor.

### Tower view rooms

Bright, and spacious (22sqm) rooms, located from the 8<sup>th</sup> to the 14<sup>th</sup> floor, guaranteeing wonderful views of either the city or the bay area,

### Deluxe rooms

Deluxe rooms are spacious (32 sqm) and have an attractive contemporary design and exquisite interior with tasteful furnishing. Rooms are located from the 8th to the 14th floor, featuring wonderful city views.

### Family rooms

Decorated in vibrant fresh colors, the family rooms have plenty of space (36 sqm) to ensure your family's comfort. Family rooms can accommodate a maximum of 2 adults and 2 children. The rooms feature a large working and relaxation area, helping you to be your best self with your family.

### Tower Suites

The commodious tower suites (from 59 sqm) combine mini malistic modern design with spaciousness. They are located on the 16th floor where the magnificent view is the star of the show. The bathrooms are roomy and have a bathtub as well as a separate shower. Bathrobes, slippers and exclusive bathroom amenities are of course included.

# Conference and meeting rooms

Fosshotel Reykjavík offers various event spaces that are suitable for large or small meetings, conferences and seminars.

The location of Fosshotel Reykjavík is also great for conference guests, as it is close to both Harpa Concert Hall and Hotel Reykjavík Grand, Iceland's largest conference hotel. We should also mention that our Tower suites can be used for smaller meetings.

	GULLFOSS	GULLFOSS A	GULLFOSS B	SVARTIFOSS
Classroom	156	110	40	–
Theatre	220	150	50	–
U-shape	48	36	20	–
Boardroom	50	40	20	16
Banquet	156	108	48	16
Reception	220	150	60	40
Size	246 m <sup>2</sup>	163 m <sup>2</sup>	83 m <sup>2</sup>	48 m <sup>2</sup>

## Gulfoss Venue

Gulfoss being the largest conference venue at Fosshotel Reykjavik seats up to 220 persons in different scenarios. This multi purpose venue is perfect for your happening, be it a conference, an annual ball, exhibition or a product launch, we welcome the chance to meet you! Our event planners and meeting experts are ready to help you through every step of the planning process.



Haust, the Icelandic word for autumn, focuses on fresh Icelandic produce cooked to perfection by some of Iceland's finest chefs.

The Fosshotel Reykjavik restaurant's cooking is inspired by Iceland's magnificent nature, the winter's harshness and the white nights of summer.



The Beer Garden is the meeting place for beer lovers in Reykjavík. We specialize in pairing the meal with the beer that elevates it. And we aim to please with our selection of draft beer that features local Icelandic brewed beers.

